

Tier 3: Stobie Mine Surface Plant Orientation - 28

1. Stobie Intro

1.1 Untitled Slide



1.2 Untitled Slide



1.3 Disclaimer

Disclaimer

The format, information, ideas and concepts used in this presentation are copyrighted. Reproduction in whole or in part is strictly prohibited. This orientation is for the sole use of personnel of Vale and all divisions and subsidiaries of Vale, and any other use is strictly prohibited without the expressed written consent of Vale.

The information contained within this orientation is intended for controlled use within the Learning and Development Department for Ontario Operations. The content and structure of this orientation provides the learner with an overview of Sudbury Operations focusing on HR policies, Health, Safety and Environment and Operational Controls.

The information herein is intended as a training presentation and is not intended to be the sole source of reference information for this system.

The content of this document is current as of the latest release date. Any discrepancies found should be noted and reported to the Learning and Development Department for action.



1.4 Untitled Slide

**We are
what
we do.**

Mission

To transform natural resources into prosperity and sustainable development.

Vision

To be the number one global natural resources company in creating long term value, through excellence and passion for people and the planet.

Values

1. Life matters most
2. Value our people
3. Prize our planet
4. Do what is right
5. Improve together
6. Make it happen

1.5 Life Matters Most

Life Matters Most

At Vale we believe
Life Matters Most
and that no job is
worth doing if it
cannot be done
safely.



2. Course Requirements

2.1 *Untitled Slide*



2.2 Course Requirements

Course Requirements

To reinforce the value 'life matters most', Vale has implemented a Contractor Site Entry Orientation, which is a graduated process to gain access to areas within a plant or site where work activity takes place.

Tier 1 – Knowledgeable in fundamental operational controls commensurate with access to Sudbury Operations.

Tier 2 – Can access a complex property but cannot access specific plants.

Tier 3 – Allows access to specific plants within a complex.



2.3 Course Requirements

Course Requirements

The Tier 2 module provided general information with regards to plant access and traffic plan requirements to enter a defined area within Sudbury Operations.

The Tier 3 module provides specific instructions for individual plant sites.

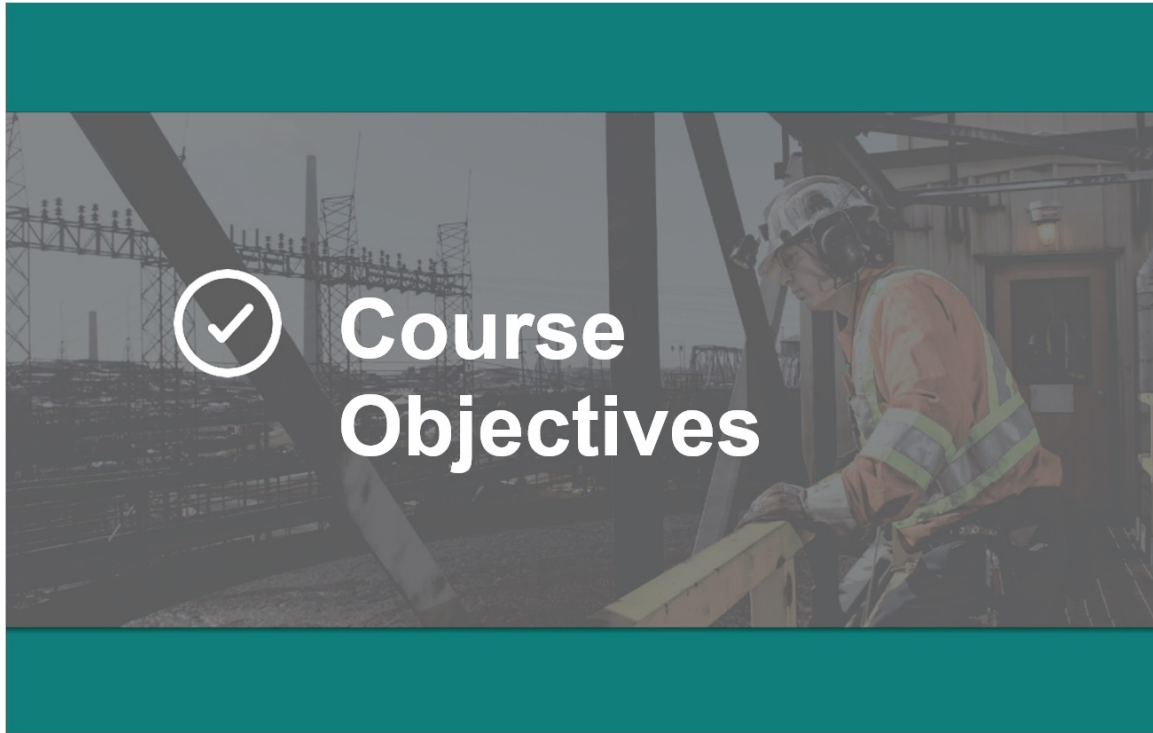
To participate in this Tier 3 Module, you will need the following:

- Lenel Card
- Tier 1 Vale Operational Controls
- Applicable Tier 2 Vale Orientation

Orientation Map:
Sudbury Operations



2.4 Untitled Slide



2.5 Course Objectives

Course Objectives

Upon completion of this module you be able to:

- Understand Plant Entry Procedure
- ✓ Gate access
- ✓ Traffic Management / right of ways
- ✓ Sign In / out Protocol at First Aid Office



2.6 Course Objectives Cont.

Course Objectives

- Identify Site Specific Hazards and methods of controls
 - ✓ Heavy Equipment
 - ✓ Haulage Trucks
 - ✓ Railway crossing / Train & Rail Cars
 - ✓ Open Pits
 - ✓ Water Ways / Dams / Pumping Station
 - ✓ Old Workings and Buildings

2.7 Course Objectives Cont.

Course Objectives

- Follow Procedures in the event of:
 - ✓ Equipment Damage
 - ✓ Personal Injury
 - ✓ Process Upset / Emergency Preparedness
 - ✓ Complete Plant Exit Procedure Checklist

2.8 Introduction

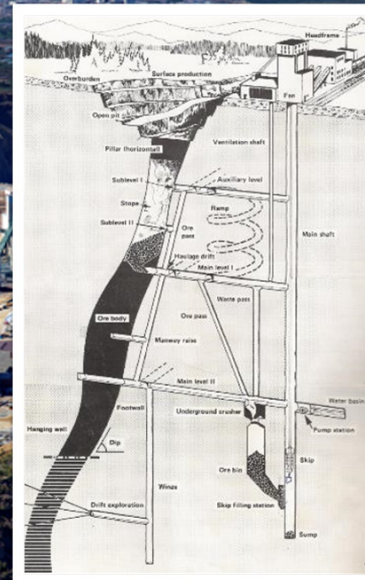


2.9 Stobie Mine Overview

Stobie Mine Overview

Key Facts:

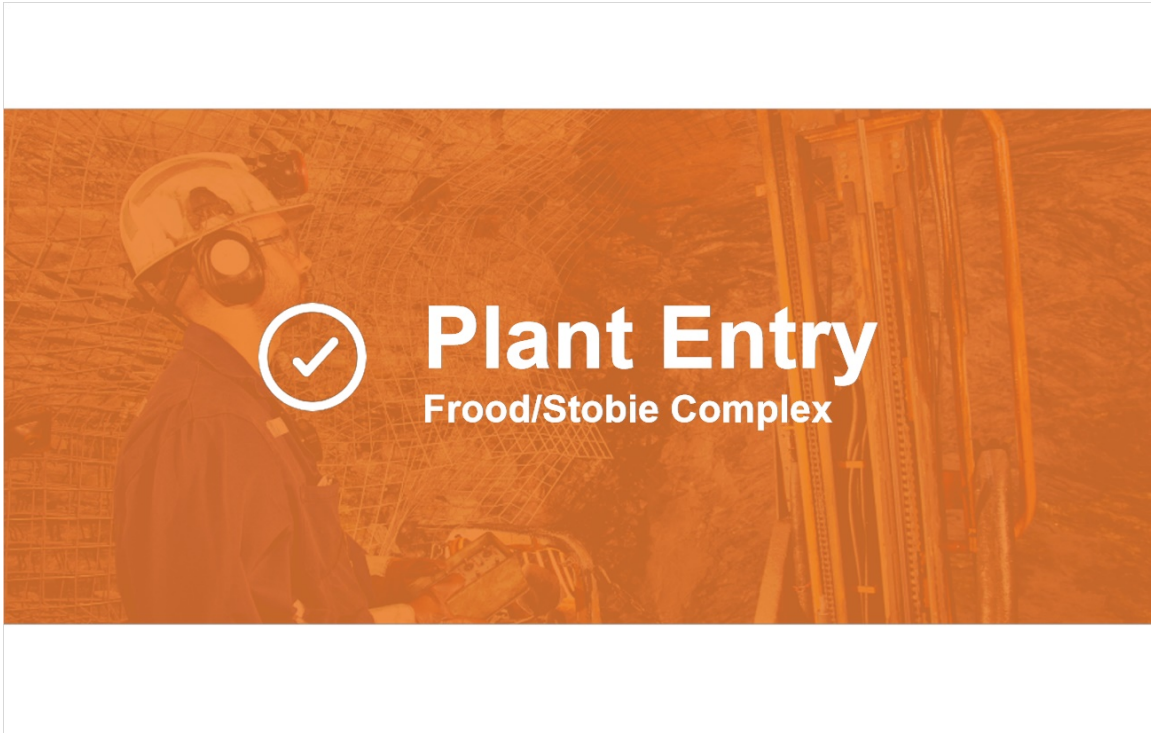
- Stobie mine was the oldest operating Vale mine in the Sudbury basin
- Produces copper, nickel and precious metals
- Two shafts with deepest to 4,075 level
- Stobie use primarily sublevel cave method of mining with vertical retreat method used mostly below 2,400 level
- Stobie is no longer an active mine, the decommissioning and reclamation project are ongoing



2.10 Stobie Mine Overview



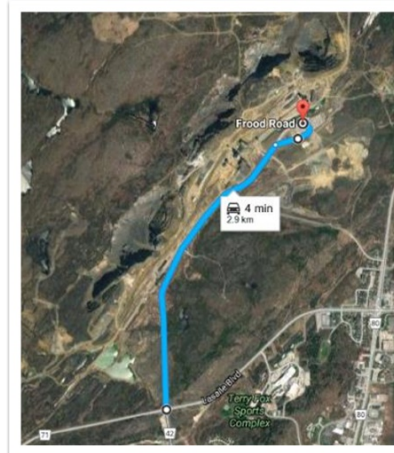
2.11 Plant Entry



2.12 Plant Access

Plant Access

Frood/Stobie Complex is accessed from the intersection of Frood and Lassalle extension.



2.13 Plant Access via Main Gate

Plant Access via Main Gate



The Speed limit on access road (main) is **60 km/hr**. The Speed limit on property roads is **40 km/hr** and **25km/hr** near buildings and shop areas. **Obey all posted signs .**

To gain access to Frood/Stobie property, Authorized visitors can enter with the Lenel Card or call First Aid for authorization. A direct line intercom is located at the new gate .

Visitors must immediately report to First Aid to sign-in.



2.14 Plant Access via Employee Parking Lot

Plant Access via Employee Parking Lot



Entering from the employee parking lot, walk through the tunnel then keep right and enter the complex door down the hallway, turn right. First aid is located next to the warm room.

Note ; this parking lot is closed during winter months

2.15 Flood/Stobie Complex Hazards



2.16 Site Specific Hazards

Site Specific Hazards

Using the tools that you learned in Tier 1 Orientation, ensure to use operation controls to mitigate risk associated to the identified hazards.



Be Aware

Be aware of my surroundings and the risks around me.



Follow Policies & Procedures

Our internal policies and procedures guide us in doing our work in a manner that reduces risk.

The following section lists identified hazards that may be encountered in the work you're doing. Knowing if these hazards apply to your work can be found through:

- Vale Contact Person
- PHA/PHR (or other Risk Assessment Tools)
- SLAM

2.17 Stobie Site Specific Hazards

Stobie Site Specific Hazards

Mobile Equipment



Mobile Equipment present a high risk hazard of collision with a vehicle or pedestrian. During travel at Froid / Stobie Complex , you'll require to cross multiple areas where equipment could potentially be operating.



2.18 Speed Limits and Signs

Speed Limits and Signs

The speed limit for un-posted roadways on the property is **25 km/hr**



The normal speed limit on the mine road is 60km/hr

- Absolutely **No Passing** of vehicles on the property
- Remember provincial law regarding the use of cell phones while driving
- On Vale property, Mobile Equipment has the right of way

2.19 Rail Traffic & Crossings

Rail Traffic & Crossings



Be sure to check both ways & making sure its safe to cross

Whether posted or not, stop at all railway crossings, look both ways, then proceed if safe to do so

Do not park within 12 feet of railway track

2.20 Confined Spaces

Confined Spaces

Be aware of Confined Spaces



A confined space is anywhere that is:

- a fully OR partially enclosed space;
- that is not designed and constructed for continuous human occupancy; and
- in which atmospheric hazards may occur because of its construction, location, contents, or because of work that is done in it.

Vale authorization, a confined space work procedure, and a rescue plan must be followed to work within a confined space.

3. Equipment Damage

3.1 Untitled Slide

Equipment Damage

3.2 Equipment Damage

Equipment Damage

An incident is an event that results in loss or harm to personal (injury/illness), environmental, asset, or equipment.

Even with "near misses", all workers, including Offsite Personnel are encouraged to initiate and/or participate.

Intent is to prevent recurrences and reduce or eliminate any further injuries.

Get in touch with your Vale Contact Person for any information required on the Incident/Accident Investigation system.

SAF 079 Report			
Incident/Condition Report No.		075506	
Name:	Smoker	First Line Supervisor:	Wills, Stephen
Area:	Casting Casting	Second Line:	
Workplace:	88 Dayhouse Line	Date of Occurrence:	September 22, 2013
		Time of Occurrence:	01:10
Originator:	Levitt, Judy	Date Reported:	September 22, 2013
Report By:	Levitt, Judy	Date Received:	September 22, 2013
SAF 079 Desc:	Residue, Roper	Last Modified By:	Levitt, Judy
Manager:	Castops, Joseph		
Injured Party:		Occupation:	Casting Control Room
		SAF 079 Issue:	Up
Description: (Check all that apply to the incident) Levitt, Judy - 20222013 12:01:00 AM During the routine pre-shift check, noticed that door 102C was still tagged out from May 21, 2013 when Roper Residue had tagged it for a S.O. door safety edge... door 102B and door 102 safety edges are also still not working. These safety edges had not been fixed for the year left out for the door. These and a full routine is may too long for a safety check that is in place for a reason to be in bad order...			
Hazard:	Potential for non-docking edge or stress	Frequency:	Frequent
Why did this happen? (In your opinion, what were the causes or contributing factors?)			
Immediate Causes:	Equipment	Actions:	Performance Expectations
Immediate Causes:	Incorrectly placed or positioned		
Basic Causes:	Incorrectly Type and Equipment		
Basic Causes:	Incorrectly Adjusted/Repair/Installation		
Contributing Factors:	Actions Taken:		
Approved By:	Scheduled Date:	September 22, 2013	
Reported By:	Completed Date:		

4. Personal Injury

4.1 Personal Injury

Personal Injury

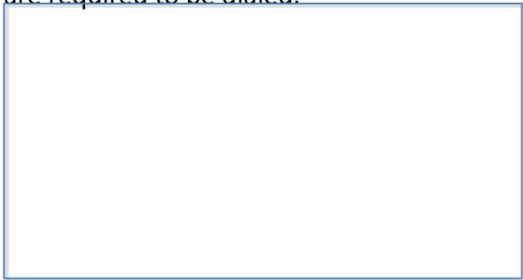
4.2 Personal Injury Reporting

Personal Injury Reporting

In the case of personal injury contact your Supervisor or contact person and report immediately to First Aid.

In the event you cannot physically report to First Aid, contact first aid at 3282 or channel 1 on your radio for emergency assistance.

Note: If you are calling any Vale number from a Vale phone only the last 4 digits are required to be dialed.



4.3 Working Alone

Working Alone

Procedure for being on Working Alone:

- Request that you be put on the list by verifying with the PSP and providing information location , length of stay with contact information . Ex;(Cell phone)
- If you do not contact PSP within 1:50 hrs the PSP will then attempt to contact you . If PSP cannot reach you they will send person to look for you .

5. Emergency Preparedness

5.1 Emergency Preparedness

Emergency Preparedness

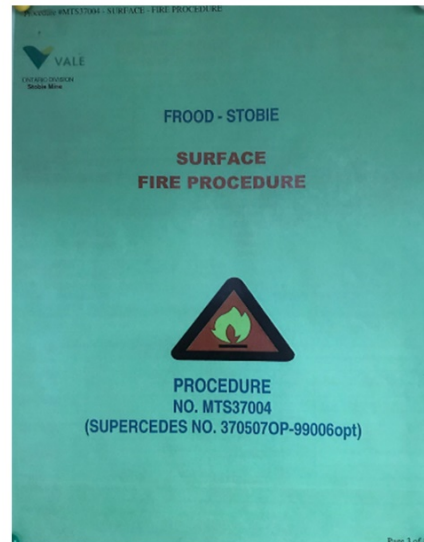
5.2 Emergency Preparedness Procedures

Emergency Preparedness Procedures

The Mines Tier 2 Orientation provides guidance on the application of Emergency Preparedness including initiating and following an emergency response plan.

The following is a general overview of how to respond to an emergency at Frood / Stobie Mine.

It is necessary that you familiarize yourself with the fire procedure(s) that apply to your specific area(s) of work at Stobie Site. Your Supervisor or plant contact will review this with you.



5.3 Emergency Reporting

Emergency Reporting

To report any emergency at Froid / Stobie Complex, notify your supervisor or plant contact immediately or contact the First Aid (PSP).

Here is the Froid / Stobie Emergency Number, as well as the radio channel in use.

Stobie Site

Emergency Number

First Aid (PSP).....705-525-3282

5.4 Emergency Notification - Surface Alarm

Emergency Notification - Surface Alarm

Fire Evacuation - OUTVAC

Continuous Tone



Leave the building by the nearest exit.



Alarm testing is conducted each Monday at 1:30 pm. Report any malfunctions immediately to your Supervisor to ensure that it is corrected in a timely manner.

5.5 Fire Procedures

Fire Procedures

Surface Fire Alarm

The Fire alarm for a surface fire consists of the mine's siren to be sounded steadily for minimum of 30 seconds without pause.

Note: Only buildings in the fire area must be evacuated.

5.6 Surface Fire Assembly Areas

Surface Fire Assembly Areas

Stobie assembly area



Frood assembly area



The Safe Assembly Area at Frood / Stobie Complex are designated with a sign displaying three people with white lettering

They are located by the walkway tunnel to the parking lot in front of Stobie Offices and in front of Frood #3 Shaft Shops

When you arrive at the assembly area a designated person will account and document that you're there.

5.7 OUTVAC – Frood / Stobie Surface Fire Procedure

OUTVAC – Frood / Stobie Surface Fire Procedure

If the fire is out of control immediately notify the Stobie PSP Office at **3282**



Give the following information:

- Name and phone number
- Location and extent of fire
- Any other useful information

Retreat from the fire area sounding any available alarms

Notify available supervision and proceed to the designated evacuation area notifying any other persons along the way.

5.8 OUTVAC - Surface Evacuation Area

OUTVAC - Surface Evacuation Area

The Fire alarm for a surface fire consists of continuous alarm.

Note: Only buildings in the fire area must be evacuated.



The Safe Assembly Areas at Vale are designated with a blue sign displaying three people with white lettering

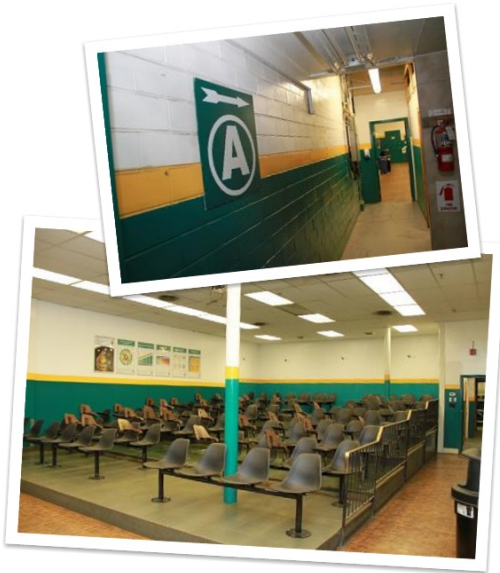
It is located by the walkway tunnel to the parking lot and the main gate.

When you arrive at the assembly area a designated person will account and document that you're there.

Under no circumstances is an employee to leave the property without reporting to the person in charge of the assembly area.

5.9 INVAC – Surface Indoor Assembly Area

INVAC – Surface Indoor Assembly Area



The designated Invac assembly areas at Stobie is in the amphitheater. All employees on surface will proceed immediately to the assembly areas to await further instructions. PLEASE, do not leave the assembly area until instructed to do so, or until the all clear is given.

Note: Froid/Stobie complex does not have a intermittent alarm. In the event a level III emergency occurs, designated emergency response personnel will dispatched to notify Employees and visitor to report to the **Invac** assembly area. Designated guards will be posted at all entrances.

6. Plant Exit

6.1 Plant Exit

Plant Exit

6.2 Untitled Slide

Plant Exit

Good work practices dictate that you close the loop on work you were doing to avoid creating risks or hazards for other work groups, cross shifts, or other work in the area. Here are some tasks to consider when getting ready to exit the plant to ensure the safety to you and those around you:

- ☐ Housekeeping – Is your worksite cleaned up after your job?
- ☐ Personal Lock and Tag – Has your personal protection been removed at the end of the shift.
- ☐ Status Tagging - Is there ongoing that needs a status tag placed or is there equipment in Bad Order that needs to be identified?
- ☐ End States – Have you left the process in the proper state?
- ☐ Waste Segregation - Have you disposed of materials in the appropriate waste receptacles/bin/area?
- ☐ Vale Contact Person – do they need an end of shift report from me?
- ☐ Permits – do I need to close or hand in any permits?
- ☐ **Sign out at First Aid and/or other designated areas**

6.3



6.4 Conclusion

Conclusion

This concludes the material for Tier 3 Vale Stobie Specific Orientation. You should now have a working knowledge and understanding of:

- The mining plant layout and boundaries
- The entry requirements
- The high level general hazards and controls with regards to:
 - ✓ Water Ways / Dams / Pumping Station
 - ✓ Traffic Management
 - ✓ Old workings
 - ✓ Mobile equipment
 - ✓ Railway crossing / Train & Rail Cars

6.5 Conclusion

Conclusion

This Orientation provided information to access Frood / Stobie Complex . In order to feel comfortable with the area, you should arrange a field visit with your Vale Contact Person or direct Supervisor to review hazards and controls specific to your work area(s).

Additionally, Depending on the site or work you're doing, you may require task-specific information through either the local Learning & Development Group or your Vale Contact Person.

6.6 Start The Module Quiz



Thank you for completing the
Vale Online Module Training.

To start the module Quiz

[CLICK HERE](#)